

Instruction of NK260 Network Connection

Version: 2020.6 1st Version

Author: Product Testing Department

Weihong Corporation, All Rights Reserved

1	Introduction.....	1
2	Operation	1
2.1	Set the IP Address	1
2.1.1	Set the IP Address for your PC.....	2
2.1.2	Set the IP Address for NK260.....	5
2.2	Connect Several NK260 Products	7
2.3	Verify Network Connection.....	8
2.4	Share Network Files	10
3	Troubleshooting.....	11
4	Legal Notices.....	14
4.1	Description of Further Rights and Restrictions:	14
4.2	Intellectual Property Rights Notice:.....	15
4.3	After-sales Guarantee:.....	15
4.4	Limitation of Liability:.....	15
4.5	Termination:	15
4.6	Applicable Law:.....	16

1 Introduction

Taking **Windows 7** computer system as an example, it is about how to manage and transfer files from your PC to **NK260** integrated CNC system (hereinafter referred to as **NK260**).

2 Operation

For network connection, do the following:

1. Set the IP address.
2. **Optional:** Connect several NK260 products
3. Verify network connection.
4. Share network files.

2.1 Set the IP Address

Before setting the IP address, ensure your PC is in the same LAN with **NK260**. For instance, if the subnet mask is 255.255.255.0, IP addresses from 192.168.1.0 to 192.168.1.255 are in the same subnet.

The method of setting the IP address include the following:

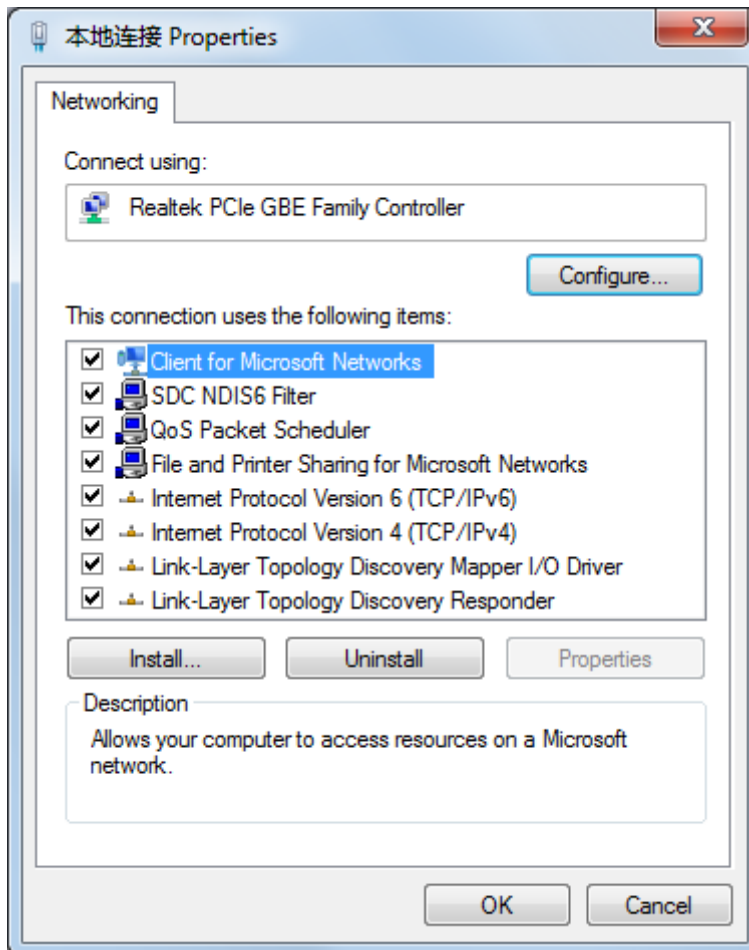
- Manual setting with the network cable and switch or a router whose DHCP function is disabled.
- Automatic setting with a router whose DHCP function is enabled.

2.1.1 Set the IP Address for your PC

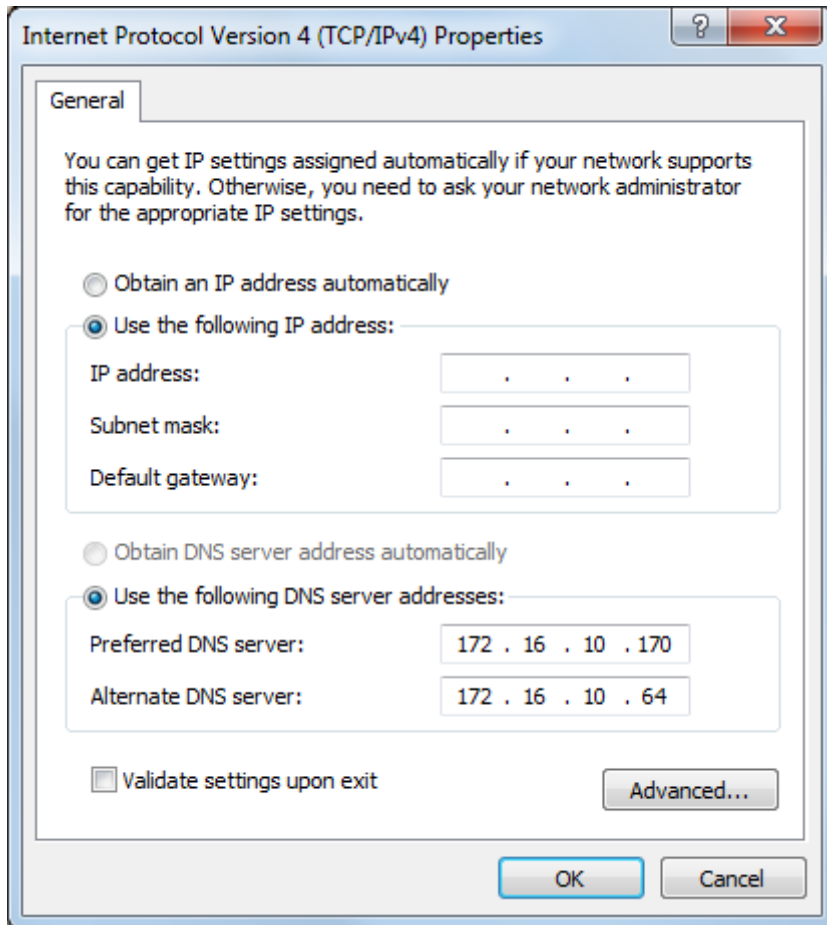
This operation is used to automatically obtain or manually set the IP address for your PC according to the connection way.

To set the IP address for your PC, do the following:

1. On your PC, click **Start** → **Control Panel** → **Network and Sharing Center** → **Change Adapter Settings** → **Local Connection** → **Properties**. **Properties** dialog box pops up:



2. Double click **Internet Protocol Version 4 (TCP/IPv4)**. **Internet Protocol Version 4 (TCP/IPv4) Properties** dialog box pops up:

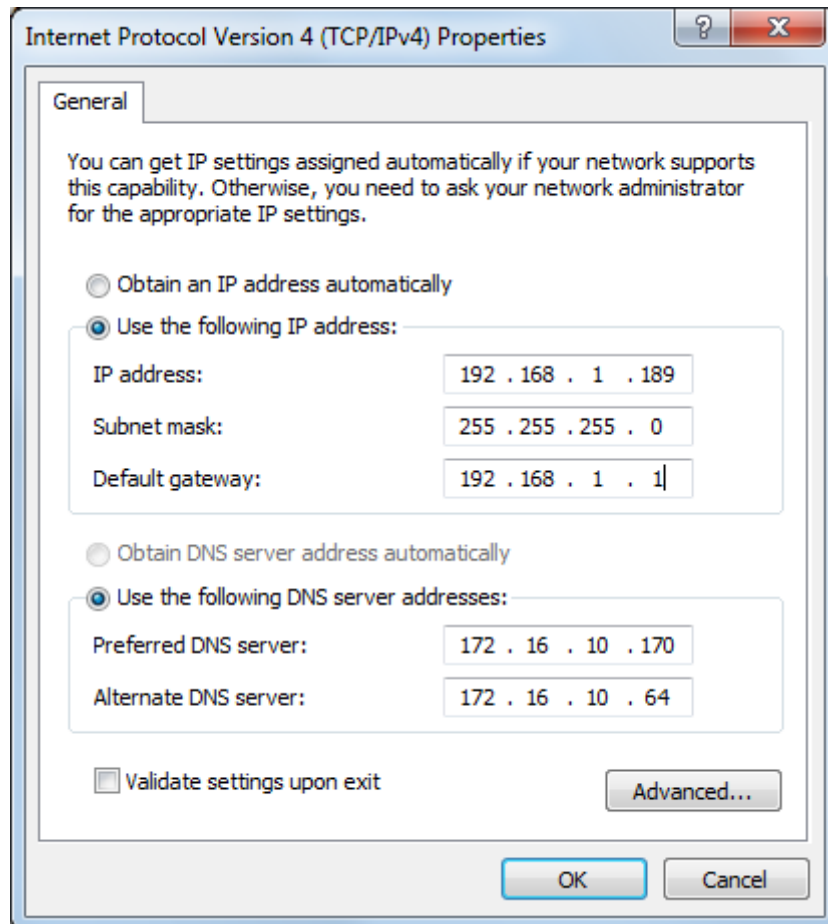


3. To set IP address, do one of the following:

- Select **Obtain an IP address automatically**. The system automatically obtains the IP address.
- Select **Use the following IP address** and input the IP address, subnet mask, default gateway and DNS server address.

The first three groups of default gateway are the same with those of IP address, and the subnet mask is automatically generated according to the IP address.


Example

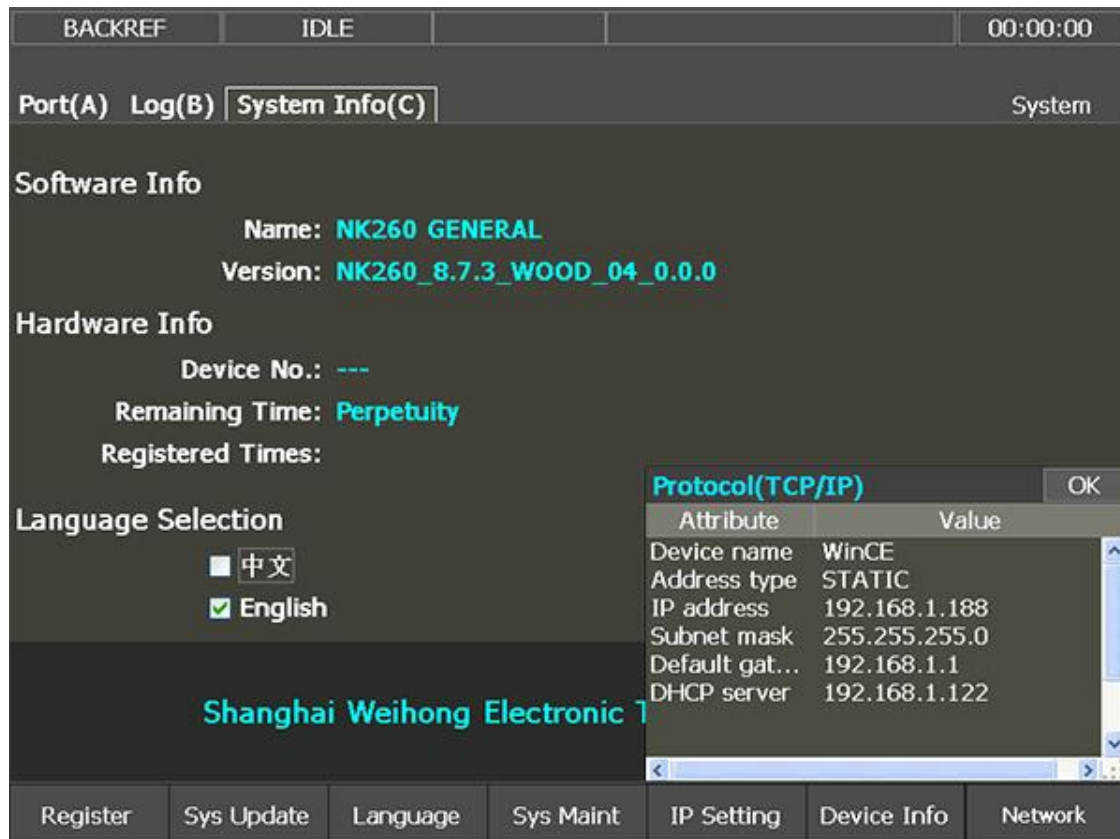



2.1.2 Set the IP Address for NK260

This operation is used to automatically obtain or manually set the IP address for **NK260** according to the connection way.

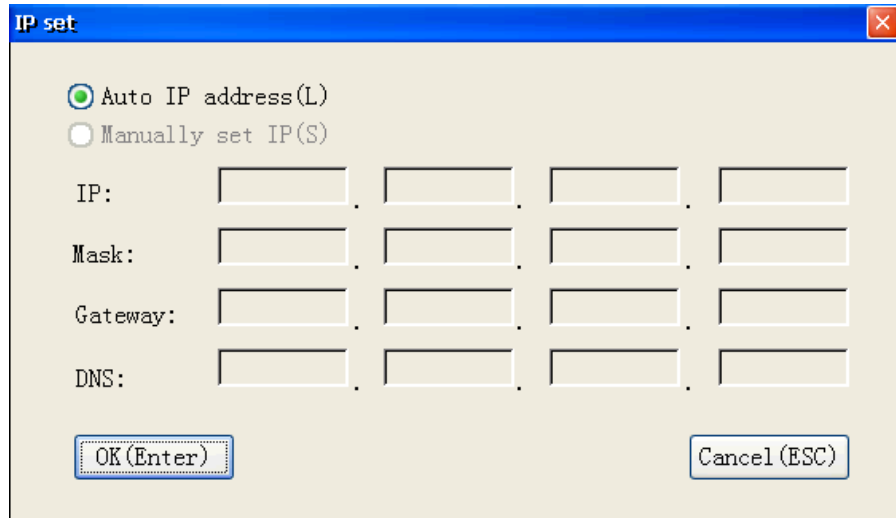
To set the IP address for **NK260**, do the following:

1. On **NK260**, press  → **C** → **F7. Net Info** dialog box pops up:



2. Press **F5**, input **FYRQ** in the password dialog box and press . **IP set** dialog box pops up.

3. To set the IP address, do one of the following:
 - To automatically obtain the IP address, press **L**:

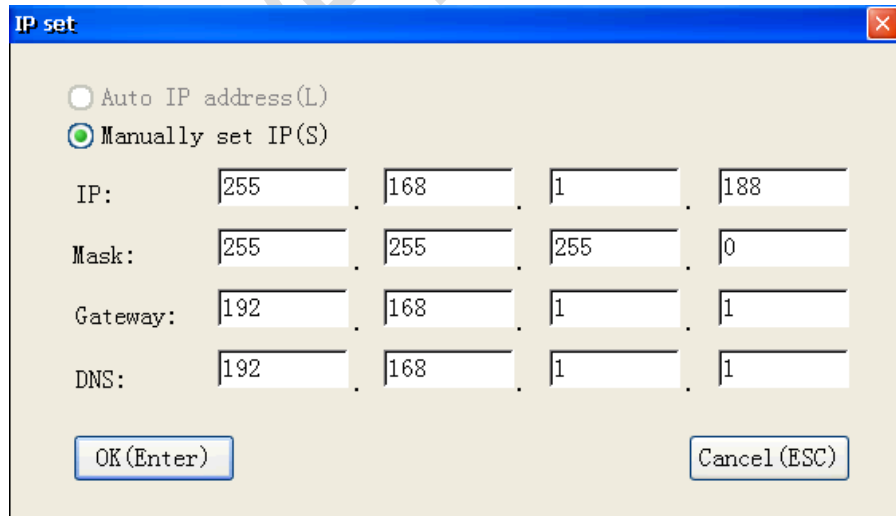


The dialog box titled "IP set" has a blue title bar with a close button. It contains two radio buttons: "Auto IP address(L)" which is selected, and "Manually set IP(S)". Below the radio buttons are four rows of input fields for IP, Mask, Gateway, and DNS. Each row has four separate input boxes for the octets of the address. At the bottom, there are two buttons: "OK (Enter)" and "Cancel (ESC)".

- To manually set the IP address, press **S** and input the IP address, subnet mask, default gateway and DNS server address.

The subnet mask, default gateway, DNS server address and the first three groups of IP address should be the same with those of your PC, and the last group of IP address should be different.

Example



The dialog box titled "IP set" has a blue title bar with a close button. It contains two radio buttons: "Auto IP address(L)" and "Manually set IP(S)" which is selected. Below the radio buttons are four rows of input fields for IP, Mask, Gateway, and DNS. Each row has four separate input boxes for the octets of the address. The example values entered are: IP: 255, 168, 1, 188; Mask: 255, 255, 255, 0; Gateway: 192, 168, 1, 1; DNS: 192, 168, 1, 1. At the bottom, there are two buttons: "OK (Enter)" and "Cancel (ESC)".

4. Press  for confirmation.

After manually setting the IP address, to validate related settings, power off and restart **NK260**.

2.2 Connect Several NK260 Products



This operation is used to connect several **NK260** products via the switch or router, so as to manage network files of these **NK260** products by your PC.

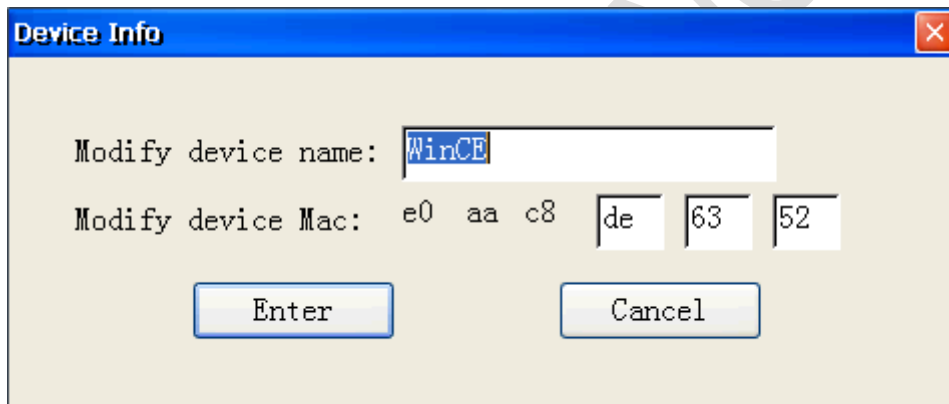
Before connecting several **NK260** products, ensure the name and MAC address of each **NK260** product are different.

To connect several NK260 products, do the following:


1. To set the IP address for all NK260 products, see [Set the IP Address for the Integrated CNC System](#).

Note: For each **NK260** product, the last group of IP address should be different.

2. Press  → C → F7, **Net Info** dialog box pops up.
3. Press F6, input FYRQ in **Password** dialog box and press . **Device Info** dialog box pops up:



The **Device Info** dialog box has a blue title bar with a close button. It contains two input fields: "Modify device name:" with the text "WinCE" and "Modify device Mac:" with the text "e0 aa c8 de 63 52". Below the fields are two buttons: "Enter" and "Cancel".


4. Modify the device name.
E.g. WinCE01, WinCE02, WinCE03, etc.
5. Modify the device MAC to any hexadecimal data.
6. Press  for confirmation.

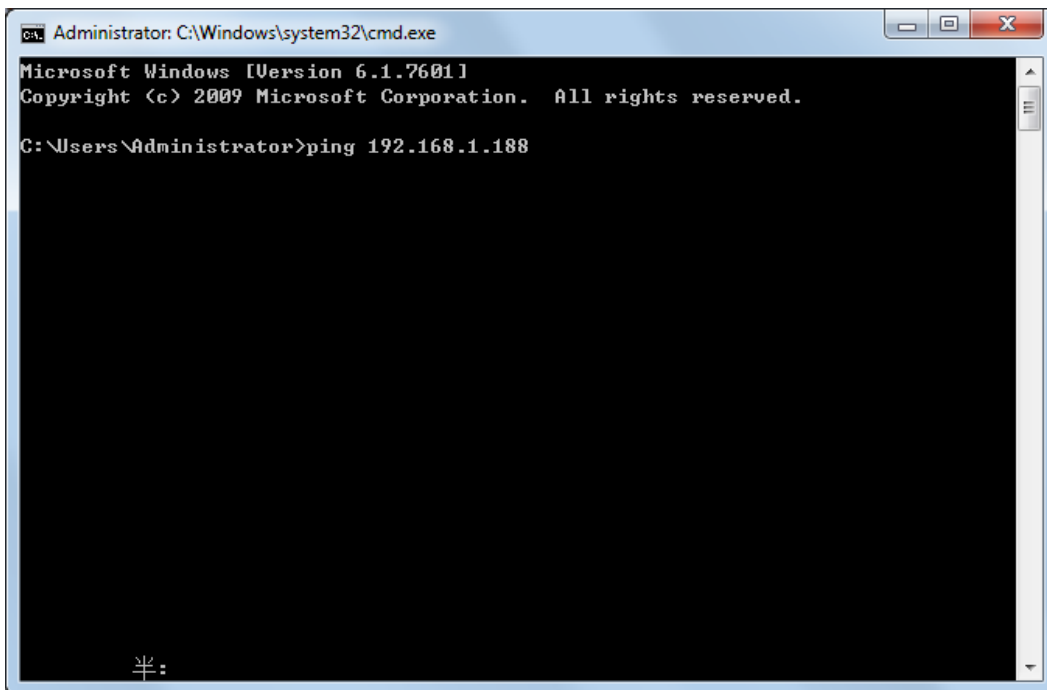
2.3 Verify Network Connection

This operation is used to verify network connection between your PC and **NK260** with a ping test.

ping command: ping + space + IP address of **NK260**

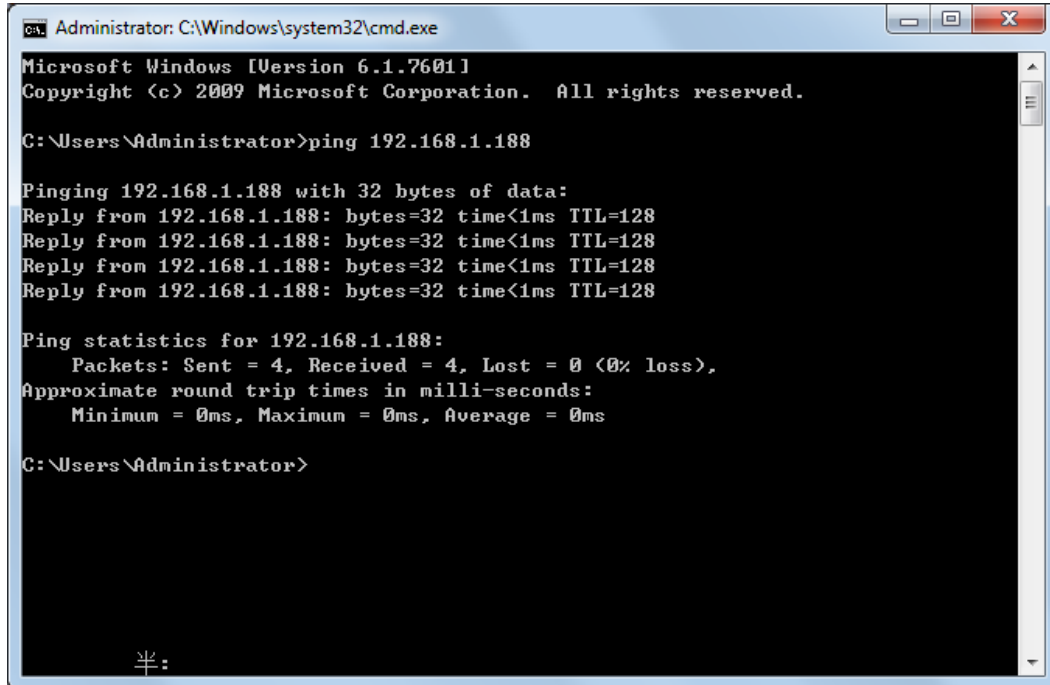
To verify network connection, do the following:

1. To open the DOS command window, on your PC, click **Start** → **Run** (or press  +R on the keyboard), and input **cmd**:



2. To verify if your PC is successfully connected to **NK260**, input the ping command and press **Enter**:

- Connection succeeds:



```
Administrator: C:\Windows\system32\cmd.exe
Microsoft Windows [Version 6.1.7601]
Copyright (c) 2009 Microsoft Corporation. All rights reserved.

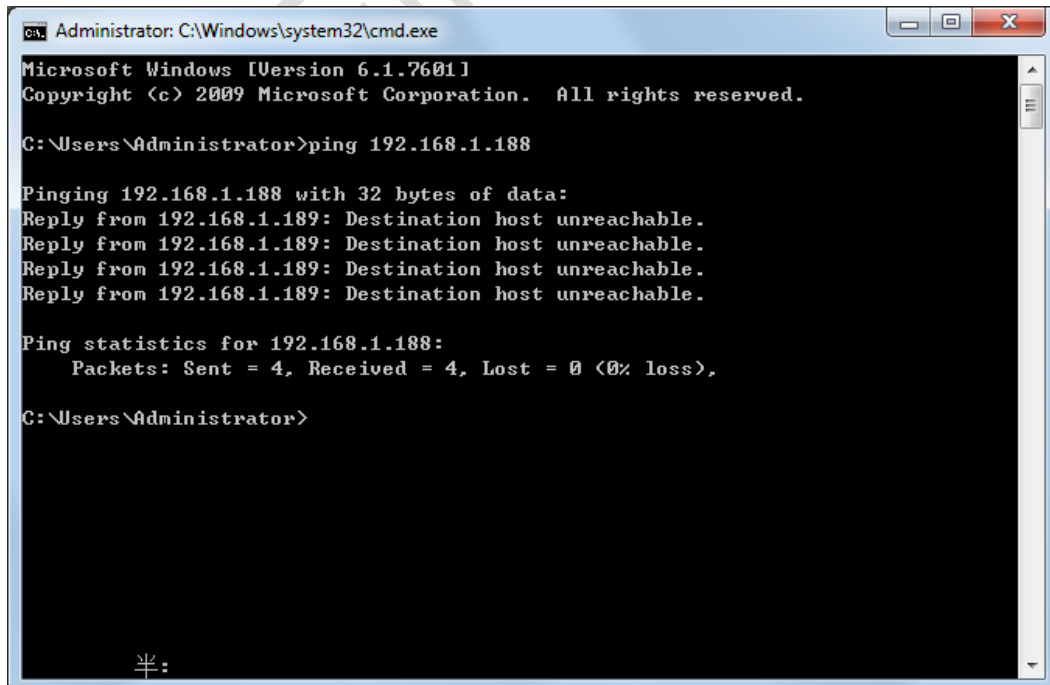
C:\Users\Administrator>ping 192.168.1.188

Pinging 192.168.1.188 with 32 bytes of data:
Reply from 192.168.1.188: bytes=32 time<1ms TTL=128
Reply from 192.168.1.188: bytes=32 time<1ms TTL=128
Reply from 192.168.1.188: bytes=32 time<1ms TTL=128
Reply from 192.168.1.188: bytes=32 time<1ms TTL=128

Ping statistics for 192.168.1.188:
    Packets: Sent = 4, Received = 4, Lost = 0 (0% loss),
    Approximate round trip times in milli-seconds:
        Minimum = 0ms, Maximum = 0ms, Average = 0ms

C:\Users\Administrator>
```

- Connection fails:



```
Administrator: C:\Windows\system32\cmd.exe
Microsoft Windows [Version 6.1.7601]
Copyright (c) 2009 Microsoft Corporation. All rights reserved.

C:\Users\Administrator>ping 192.168.1.188

Pinging 192.168.1.188 with 32 bytes of data:
Reply from 192.168.1.189: Destination host unreachable.
Reply from 192.168.1.189: Destination host unreachable.
Reply from 192.168.1.189: Destination host unreachable.
Reply from 192.168.1.189: Destination host unreachable.

Ping statistics for 192.168.1.188:
    Packets: Sent = 4, Received = 4, Lost = 0 (0% loss),


C:\Users\Administrator>
```

See [Troubleshooting](#) for details.

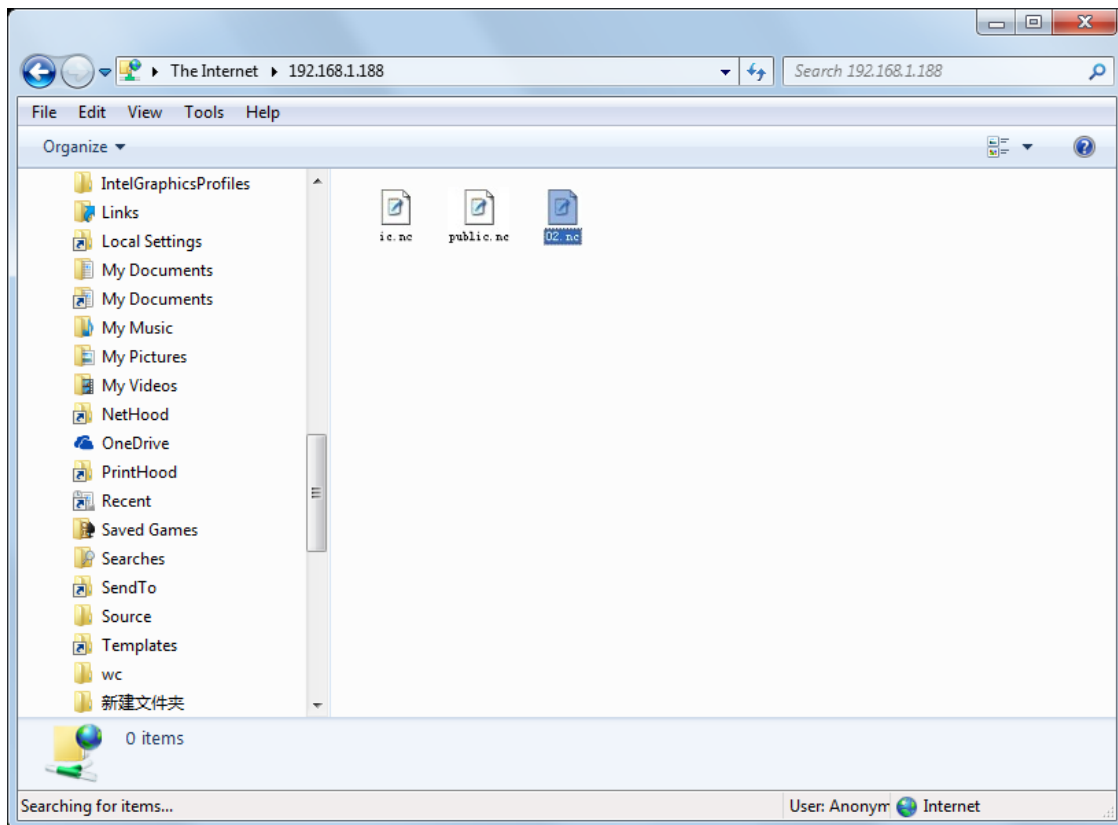
2.4 Share Network Files

This operation is used to manage network files of **NK260** via **FTP** after connecting your PC to **NK260**.


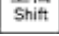
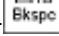
To share network files, do the following:

1. To open the network folder of **NK260**, on your PC, click **Start** → **Run** (or press  + **R** on the keyboard) and input **ftp:// NK260 IP address or device name** in the bar of file path:

Eg. ftp://192.168.1.188 or ftp://wince01.



2. To upload a network file, copy the target network file in your PC to the network folder.
3. **Optional:** To delete / rename / copy the network file, in the network folder, right click the target network file and select **Delete** / **Rename** / **Copy** in the pop-up menu.

4. To check uploaded network files on **NK260**, press  → **A** →  + .

Test.nc	1	2036-11-3	18:47	
M99.nc	1	2037-2-6	12:9	
M30.nc	1	2037-2-6	12:19	
ic.nc	29	2036-11-13	8:20	Net
public.nc	29	2036-11-13	7:31	Net
02.nc	29	2013-8-28	2:28	Net

There is a sign **Net** in front of each network file in the program file list of **NK260**.

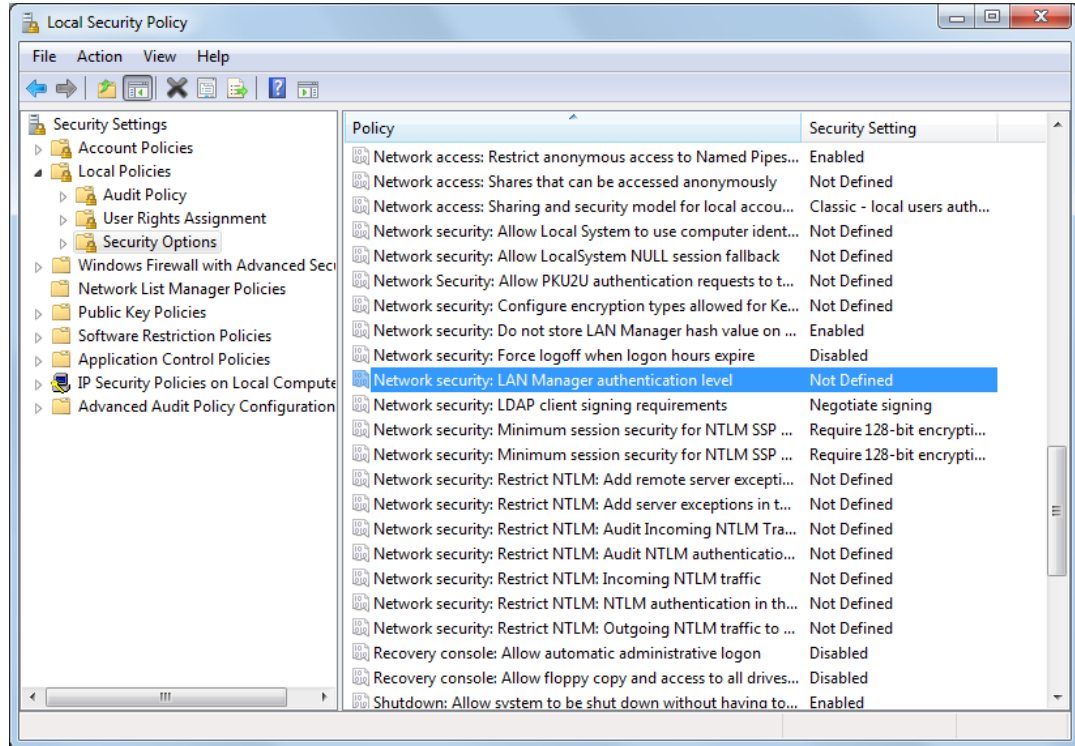
3 Troubleshooting

If your computer cannot be connected with **NK260**, to troubleshoot network connection, do the following:

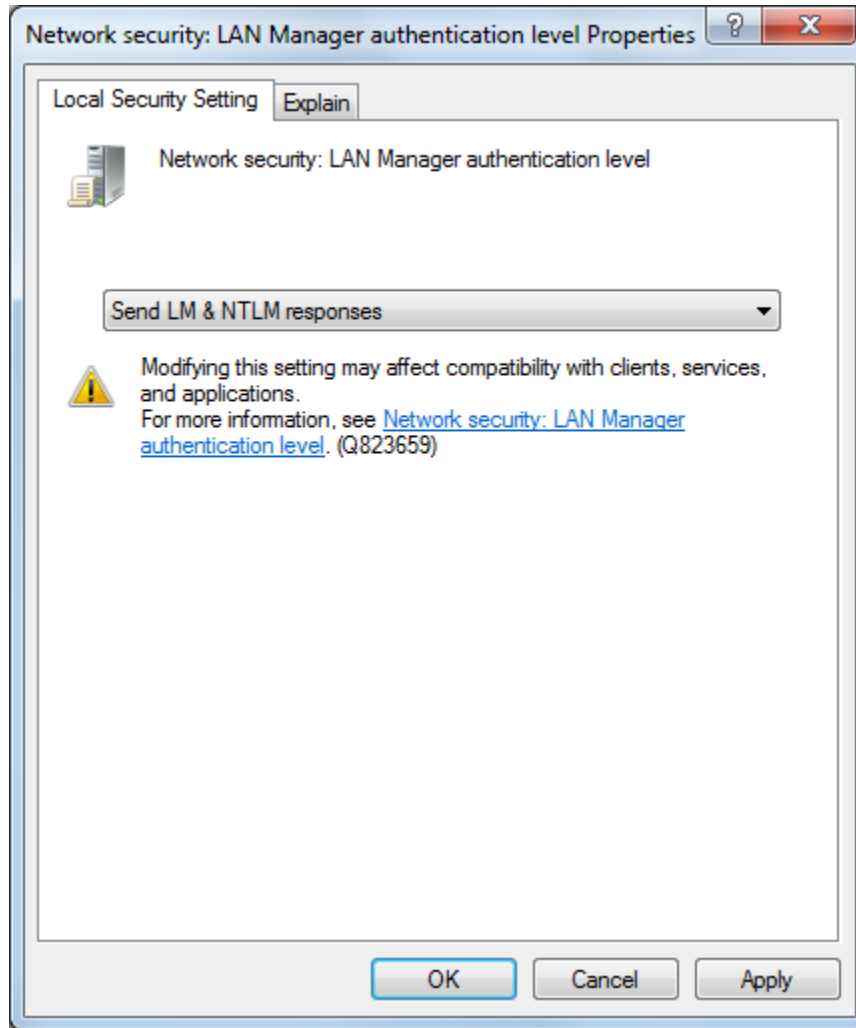
- Check if the wiring between your PC and **NK260** is correct:
 - Yes: Proceed to the next step.
 - No: Do wiring again.
- Check if IP addresses of your PC and **NK260** are set correctly:
 - Yes: Proceed to the next step.
 - No: Reset the IP address, power off and restart **NK260**.

See [Set the IP Address](#) for details.

3. To check network security settings of your PC, do the following:
 1. Click **Start** → **Control Panel** → **Administrative Tools** → **Local Security** → **Local Policies** → **Security Options** and find **Network security: LAN Manager authentication level**:



2. Double click **Network security: LAN Manager authentication level**. **Network security: LAN Manager authentication level Properties** dialog box pops up:



3. Check if the local security setting in **Local Security Setting** interface is **Send LM & NTLM responses**:
- Yes: Contact us.
 - No: Modify it to **Send LM & NTLM responses**, click **OK** and restart your PC.

4 Legal Notices

Important—Read Carefully before Using This Product:

The term “Software Product” includes all copies of the licensed software and its documentation. This license agreement is a legal agreement between You (either an individual, a legal entity or any affiliated companies or other entities) and Weihong Electronic Technology Co., Ltd. (hereinafter referred to as Weihong Company). By installing, copying, or otherwise using the Software Product, you agree to be bound by the terms and conditions of this license. Unless otherwise stated in this agreement, you shall not use, copy, revise, rent, or transfer the Software product or any part of the Software Product for any other purposes.

4.1 Description of Further Rights and Restrictions:

4. You may install for use one copy of the Software Product on a single machine;
5. You may make a copy of the Software Product for archive or backup purposes and the copy is to be used on this machine only;
6. You may transfer the Software Product and the license agreement to a third party, provided that the third party accepts the terms and conditions stated in this agreement, with prior express permission from Weihong Company;
7. When transfer confirmed, you shall transfer all the copies of the original documents and the supplementary documents to the third party or destroy all the copies un-transferred;
8. You can use the Software Product on a network server or intranet server only if it is stipulated in explicit terms that you are allowed to use the Software Product on a network server or intranet server, or you have purchased license for each node and terminal using the Software Product;
9. You may NOT sublicense, assign or transfer the license agreement;
10. You may NOT or direct any third party to reverse engineer, decompile or disassemble the Software Product;
11. You may NOT copy or transfer the Software Product or any part of the Software Product unless otherwise expressly stated in this agreement;
12. The license agreement shall be terminated automatically upon you transfer the Software Product or copies of all or part of the Software Product to a third party.

4.2 Intellectual Property Rights Notice:

The Software Product and all intellectual property rights therein (including but not limited to any all copyrights, patents, trademarks, and publicity rights) are owned by Weihong Company. The Software Product is protected for Weihong Company on the basis of copyright law and international treaty provisions as well as on the basis of other laws and agreements regarding intellectual property. You are not allowed to remove the copyright statement made in the Software Product, and guarantee that you shall copy the copyright statement in all copies of the Software Product or of any part of the Software Product. You are obliged to stop any form of illegal copying of the Software Product and accompanying materials.

4.3 After-sales Guarantee:

Weihong Company guarantees that for 90 days from the date of shipment the software carrier will be free from defects in materials and workmanship. When such a defect has been confirmed, our only responsibility is to replace the software carrier. This remedy is your exclusive remedy. This after-sales guarantee is invalid for any carrier defect caused by accidents, abuses or maloperation. The replaced software carrier enjoys the remaining guarantee time of the original software carrier or of a 30-day guarantee time, whichever is longer. Except as the after-sales guarantee made above, the Software Product does not enjoy any other form of after-sale guarantee.

4.4 Limitation of Liability:

The above guarantee, whether made explicitly or by implication, constitutes the entire contents of the guarantee, including guarantee for the commerciality and applicability of special application aim. Whether you follow other terms in this agreement or not, Weihong Company, as well as its agents and sales staff, will not be responsible for any profits loss, availability loss, business break-off or any forms of indirect, special, accidental or inevitable damage or claim made by any third party, generated from the using of the Software Product, even if Weihong Company has been informed of the possible occurrence of such events in advance.

4.5 Termination:

This license may be terminated by Weihong Company at any time once you violate any terms or conditions made in this agreement. Once the license is terminated, you are obliged to destroy all the copies of the Software Product or return them to Weihong Company.

4.6 Applicable Law:

Copyright Law, Regulations for the Protection of Computer Software, Patent Law and other relevant laws and regulations. Now, we affirm that you have already read through this agreement and understood it thoroughly and agreed to comply with all of the terms and conditions of this agreement strictly.

Weihong Electronic Technology Co., Ltd.

WEIHONG

SPECIALIZED / CONCENTRATED / FOCUSED



Shanghai Weihong Electronic Technology Co., Ltd.

Address: No. 1590, Huhang Rd., Fengxian, Shanghai, China, 201401

Hot-line: 400 882 9188

Website: www.weihong.com.cn/en